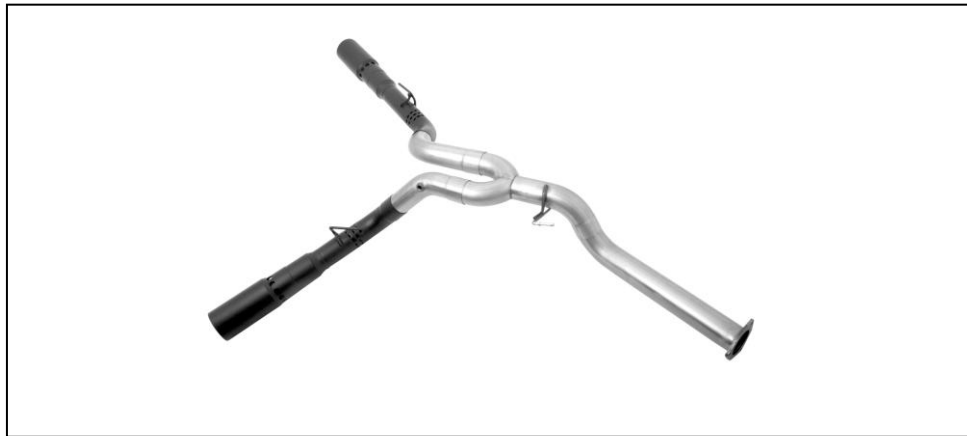




Installation Instructions

Cat-Back Stainless Dual Extreme Exhaust
Ford F250/F350/F450 Super Duty, 6.7L Diesel 2/4wd
Crew Cab, Long Bed

Part #69712-B



ITEM	PART	QUANTITY	DESCRIPTION
A	999700931S	1	4" Stainless Headpipe w/ Flange
B	999700932S	1	4" Extension Y-Pipe
C	999700933S	1	4" Driver side Overaxlepipe
D	999700934S	1	4" Passenger Side Overaxlepipe
E	999700935S-B	1	4" Passenger Side Exit pipe w/6.0" Tip
F	999700936S-B	1	4" Driver Side Exit pipe w/ 6.0" Tip
G	4171	5	4" Clamp
H	800029	1	Driver Side Exit Pipe Hanger

Thanks for purchasing our Gibson Exhaust System for your Vehicle
If you need further assistance, please do not hesitate to call our technical department at
(800) 528 -3044 Monday through Friday, 8am to 5 pm.

Installation Instructions #69712-B

When installing this exhaust system make sure to use proper safety precautions. Use jack stands when working under the vehicle, set parking brake, block tires and use safety glasses and gloves. Allow exhaust to cool before attempting installation. Severe injury or burns could occur if safety measures are not taken.

SUGGESTED TOOLS: 1/2", 9/16", 15mm wrenches & sockets, WD-40, hacksaw, jack stands

1. Disconnect the negative battery cable before removal of OEM exhaust. This will allow the computer to reset and recognize the new exhaust. Lay out the exhaust on the floor so it looks like the drawing and compare parts with manual.



1. To remove your stock exhaust, remove it from the 3 bolt flange located just behind the converter. **(MAKE SURE TO REMOVE THE EXHAUST SENSOR LOCATED ON THE OVER AXLE PORTION OF YOUR FACTORY EXHAUST YOU WILL NEED A 15/16")**



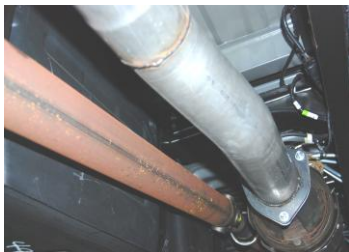
5. Install the overaxle pipe pipes. The Driverside will have the NPT bung for the factory sensor. Do not tighten. This is a critical part in the exit location of your exhaust tips. If you are having troubles getting the tips to exit even this is the point where adjustments made can help find your perfect fit.



2. Disengage the welded hangers from the OEM rubber grommets. Use WD-40 to aid in the process. Do not damage or remove the rubber grommets as you will re-use them. Now, cut off tailpipe and remove exhaust. You also will re-use your factory nuts.



6. Install the driver side hanger #H using a factory bolt location and bolt. The bolt is the lower left bolt that mounts your overload bump stop to the outside of the from rail rear of the axle on the driver side. Install and keep loose until final fitment.



3. Install headpipe #A onto your existing stock front pipe Re-using the factory nuts.



7. Install both the driver side and passenger side exit pipes. Use a jack stand to support the tips up while you make final adjustments to find the perfect fit. Adjust the kit to fit properly giving at least 1.5" of clearance from all components. Begin to tighten the system from the front forward. Be sure after each connection is tightening to go back and check your tip position as it can move.



4. Install the Extension Y-pipe #B onto headpipe 1.5"-2". Use clamp #G to secure. Do not Tighten



8. Re install NPT sensor. Use stainless steel cleaner to prevent tip from discoloration, Inspect all fasteners after 25-50 miles & retighten as necessary

GIBSON EXHAUST systems are designed on a factory stock vehicle. Any aftermarket products installed could increase the sound levels of the exhaust. **Make sure there is a 1" clearance from ALL rubber brake lines, shock boots, lines, tires, etc. to prevent heat related damage or fire.**